

Invicta Lithium Golf Cart Range (GC2)



INVICTA LITHIUM GOLF CART

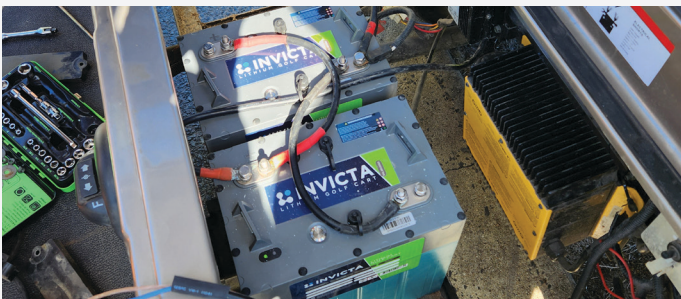
Features and Benefits

- Easy To Follow Instructions
- Conversion Kits For Popular Models
- Bluetooth or Wired Monitoring
- IP67 Rated
- Safe LiFePO₄ Technology
- BMS Protections
- Improved Cart Efficiency
- Faster Acceleration
- Faster Recharge
- Maintenance Free
- 5-year Full Replacement Warranty
- Get Up To 36 Holes From One Charge
- CAN Bus Supported
- Isolation Switch To Limit Self-Discharge
- Safety Certified

Easy To Install

Invicta Lithium Golf Cart batteries are available with a variety of conversion kits for Club Car, Yamaha, E-Z-GO, and many more. Simply remove your old lead batteries and replace with an Invicta Lithium Golf Cart system using the supplied instructions. For peak performance, our packages also come with an Invicta Lithium Charger that matches your battery voltage.

Also available is a monitoring kit, wired or wireless. You can use the free Invicta Bluetooth App or wired loom and gauge that connects via a CAN bus port for accurate monitoring of the battery's state-of-charge.



Core Lithium Benefits

Remove your old lead batteries, upgrade to an Invicta 48V Lithium Golf Cart system and start enjoying the benefits of lithium today. Invicta Lithium utilises inherently safe LiFePO₄ cells and BMS protections and also provides a quicker charging time, faster acceleration, easier braking, and overall more efficiency.

No more water kits needed! Invicta Lithium requires no maintenance and comes with a 5-year full replacement warranty. Simply charge and go. And with up to 36 holes off a single charge you'll be confident you'll get around the course, even if your handicap isn't great.



Scan me or go to invictalithium.com.au for more information

Accessories



Wired Or Wireless (Bluetooth) Monitoring



48V18Ah Invicta Lithium Charger



Conversion Kit For Popular Golf Cart Models